



drake & co
ESTATE AGENTS



4 LANGDALE ROAD MANCHESTER

£130 Per Week

Student Accommodation Available 1st July 2026 £130ppw*

This terraced property has an abundance of space for tenants to enjoy. There are four large double bedrooms which have had new carpet and blinds, a kitchen dining room which overlooks the rear yard, and a separate lounge. Tenants also benefit from a ground floor shower room, plus a newly renovated shower room on the first floor, and an additional WC. Situated in a prime location, tenants can travel to the universities in Manchester, as well as the City Centre via public transport or walking.

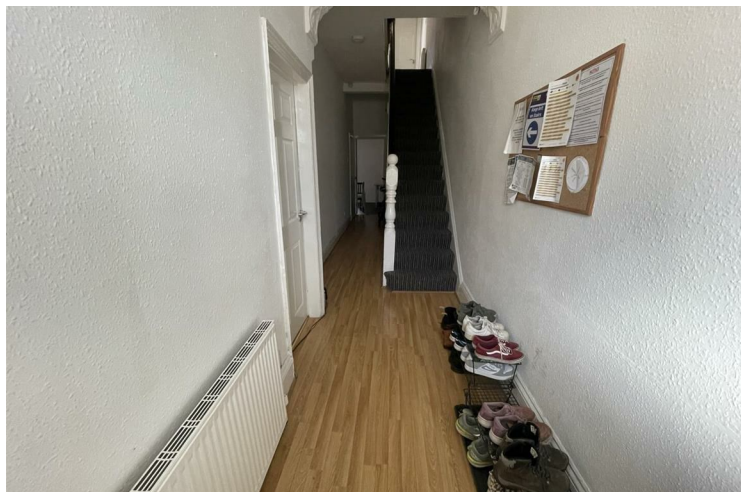
Property Reference: P1153

*Bills Paid Ltd manage the utilities at the property, their Inclusive Bills Package covers: gas, electric, broadband, water and a TV Licence, for an additional £26ppw (terms and conditions apply). This property has a water meter.

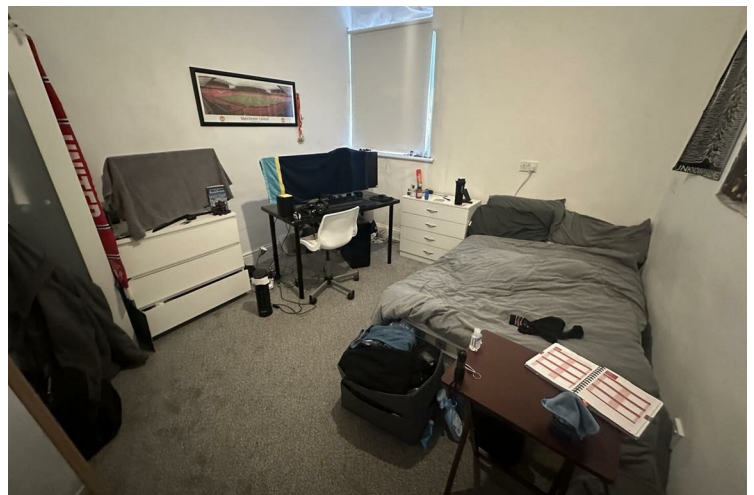
- 12 month tenancy
- Deposit equivalent to 5x weekly rent
- Holding deposit equivalent to 1x weeks rent due to secure the property, this goes towards the total deposit due
- Rent and utilities calculated per calendar month (not four weeks basis)

Don't miss out, contact the office and quote the property reference above to book your viewing today!

Disclaimer: These particulars are believed to be accurate but they are not guaranteed and do not form a contract. Any images, videos and/or floorplans on this brochure are for guidance purposes only and are not necessarily to scale.



- 4 Bedrooms • House • Victoria Park • Fully furnished • 2 Bathrooms/shower rooms • Inclusive Bills £26pppw • New shower room • Washer/dryer







Energy Efficiency Rating		
	Current	Potential
Very energy efficient - lower running costs		
(92 plus) A		
(81-91) B		83
(69-80) C		
(55-68) D	66	
(39-54) E		
(21-38) F		
(1-20) G		
Not energy efficient - higher running costs		
England & Wales		
EU Directive 2002/91/EC		

EPC Rating: D Council Tax Band: B

Agents Note: Whilst every care has been taken to prepare these particulars, they are for guidance purposes only. All measurements are approximate and are for general guidance purposes only and whilst every care has been taken to ensure their accuracy, they should not be relied upon and potential buyers/tenants are advised to recheck the measurements

Drake & Co
Anson Parade
161a Dickenson Road
Rusholme
Manchester
M14 5HZ

0161 224 2134
info@drakes.co.uk
<https://www.drakes.co.uk/>

